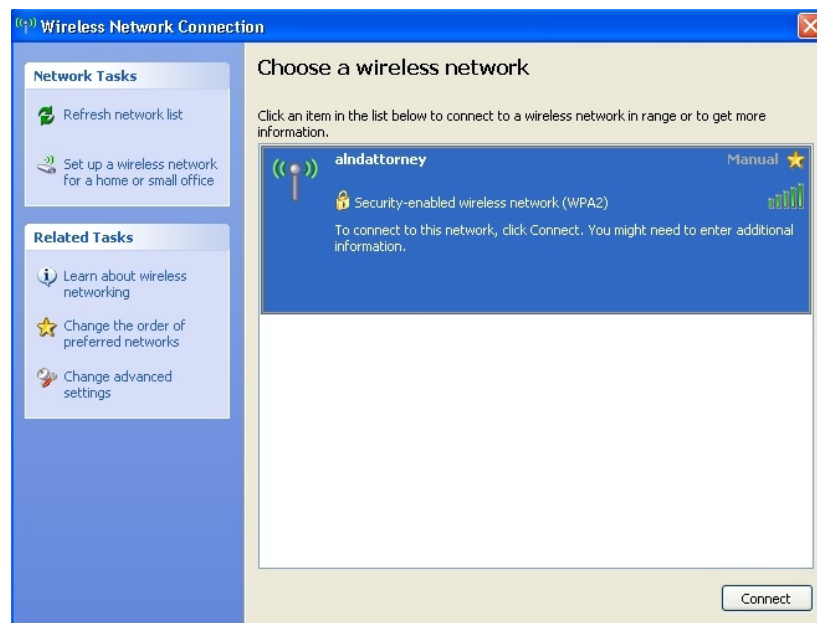


Attorney Network Login Instructions for Windows XP

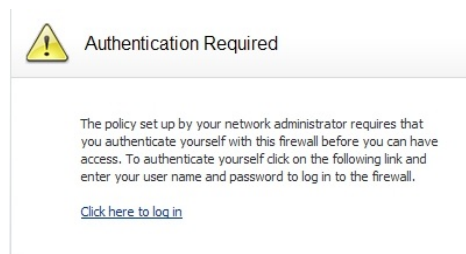
1. Click on the wireless network connection icon located at the right side of your task bar.

Look for available networks. Select “alndattorney” and click on the connect button. (If you have connected in the past, this may not show up.)



2. Open your browser.

Click the “Click here to log in” hyperlink.



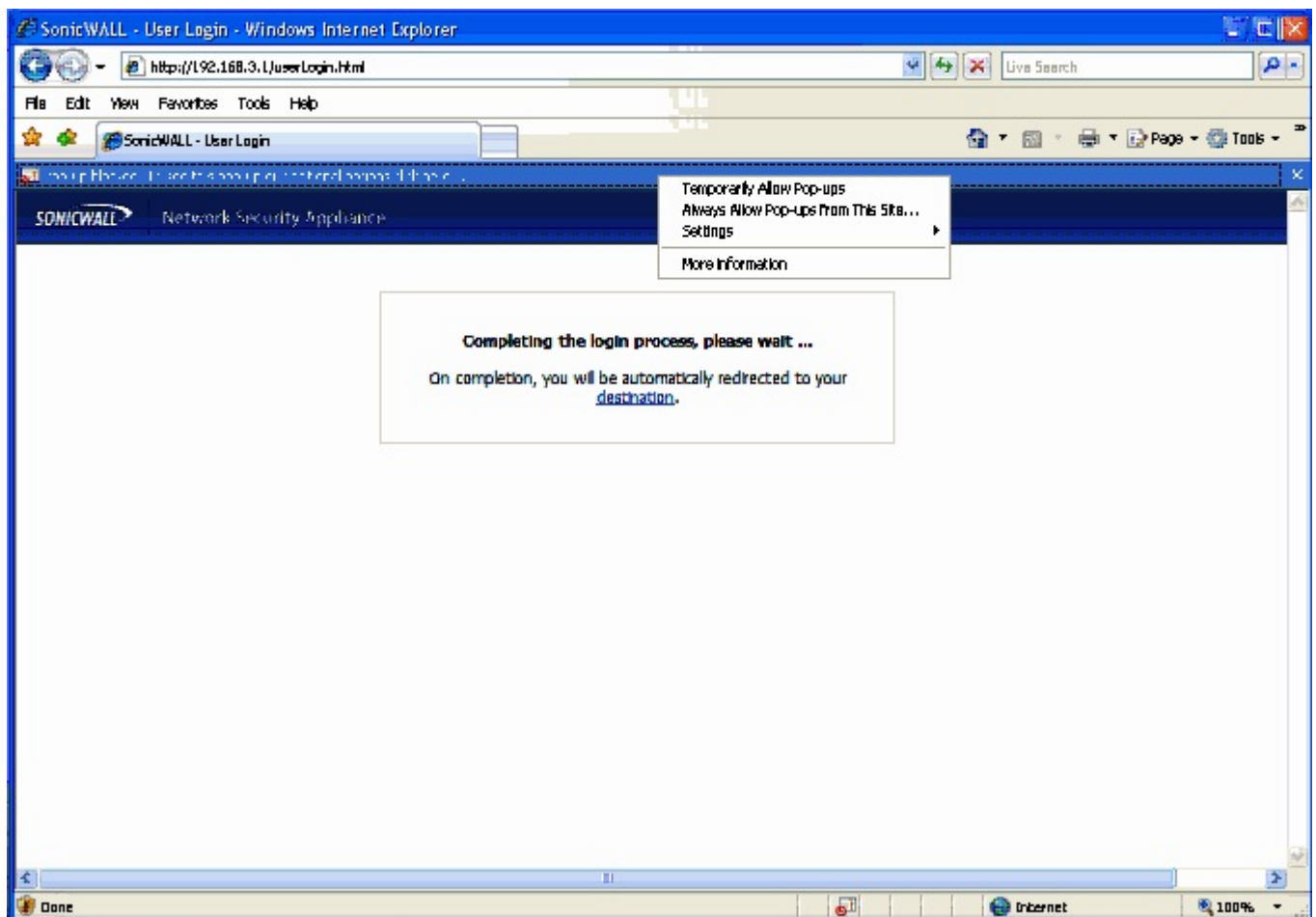
3. Type in your CM/ECF user name (include dashes) and password used to access CM/ECF for the U.S. District Court, Northern District of Alabama.



Click the Login button.

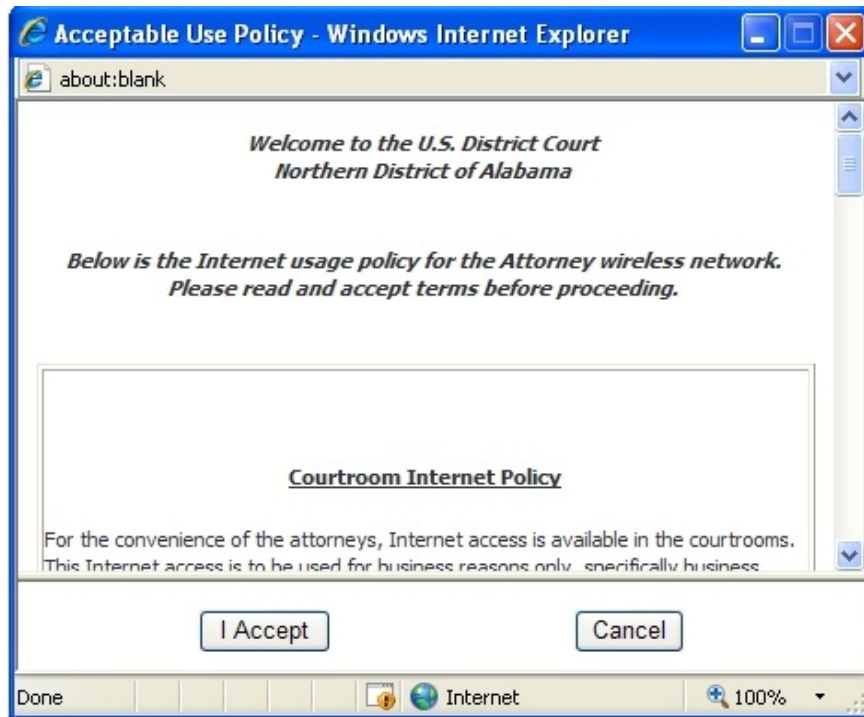
Note: If Pop-up Blocker is turned on, a message bar will appear above the web page stating **Pop-up blocked. To see this pop-up or additional options click here...**

Click on the bar and select the option **Always Allow Pop-ups from This Site...**



4. A window will appear displaying the Internet Policy for the Attorney Network. Read the Internet usage policy. If you agree, click the “I Accept” button. You will be connected to the attorney wireless network (alndattorney).

If you do not agree to the terms, click on the “Cancel” button. The “Logged Off” web page will be displayed.



5. The User Login Status window will be opened. Note that it may be behind your browser or minimized. **Do not close this window or you will be disconnected.** Click on your browser screen to bring it to the front.

At this point, you are connected to the internet.



6. When you are ready to log off, close your browser and you will see the “User Login Status” screen you left behind your browser. (If you do not see this screen, look to see if it is minimized and open the window.) Click on the “Logout” button to exit.

